



Made to fit.

Features, components, and appliances depicted in this series of drawings may or may not be installed on your motorhome as a consequence of the features, components, and appliances being optional equipment and/or equipment not available for installation on the motorhome model you purchased. Actual features, components, appliances, and system details are subject to change. Thor Motor Coach, Incorporated reserves the right to make changes, substitutions, and improvements to its motorhomes at any time without prior notification.

The information contained in these systems drawings are for illustrative purposes only and closely represent the systems of the motorhome model and floorplan at the time of publication. The illustrations of components and their locations shown in this document may be scaled, moved, modified, or eliminated in an attempt to enhance clarity of other features and system details, and as a consequence, may not accurately represent the location, features, components, and appliances associated with actual Thor motorhome models and floorplans.

All content within and associated with this series of drawings is confidential and proprietary information, published and copyrighted by Thor Motor Coach, Inc. All Rights Reserved. No portion of this document may be directly or indirectly copied, published, reproduced, modified, displayed, sold for publication, or redistributed in any form or medium.

Consult with your selling dealership or contact Thor Motor Coach, Customer Care directly with questions regarding features and operations of any component or system of your motorhome.

Thor Customer Care can be reached by calling Toll Free: 877-855-2867, M-F, 8:00a-5:00p (EST). Written requests for information can be sent to:

Thor Motor Coach
Attn: Customer Care
PO Box 1486
Elkhart, IN 46515-1486

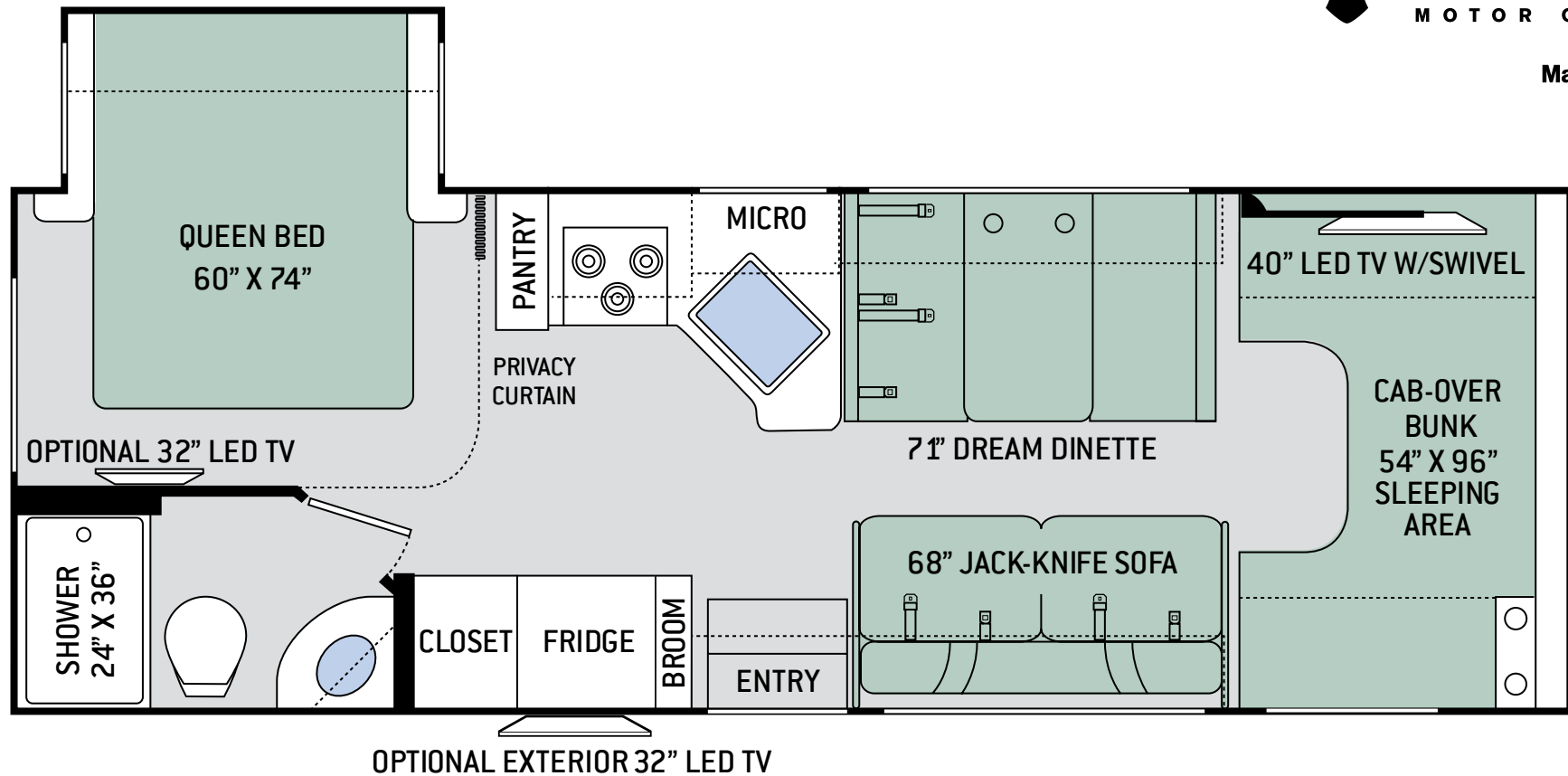
Include the model, year, and Vehicle Identification Number (VIN) of your motorhome with your request.

Chateau/Four Winds 26B

Disclaimer Statement
Model Year 2018

Drawings and Illustrations Current for TMC Model Year 2018: April, 2017 - April, 2018

Made to fit.



SPECIFICATIONS

Chassis & Drive Train: **Ford/Chevy**

GVWR: **12,500/14,200 pounds**

GCWR: **18,500/20,000 pounds**

Overall Length: **27'-6"/28'-0"**

Overall Height: **10 feet, 10 inches**

Wheelbase: **183/184 inches**

Exterior Width (excluding mirrors): **99 inches**

Interior Height: **84 inches**

Fuel Tank Capacity: **55/57 gallons**

Propane Tank Capacity): **40.9 pounds**

Exterior Storage Capacity: **40 cubic feet**

Furnace (BTUs): **30,000**

Water Heater Capacity: **6 gallons**

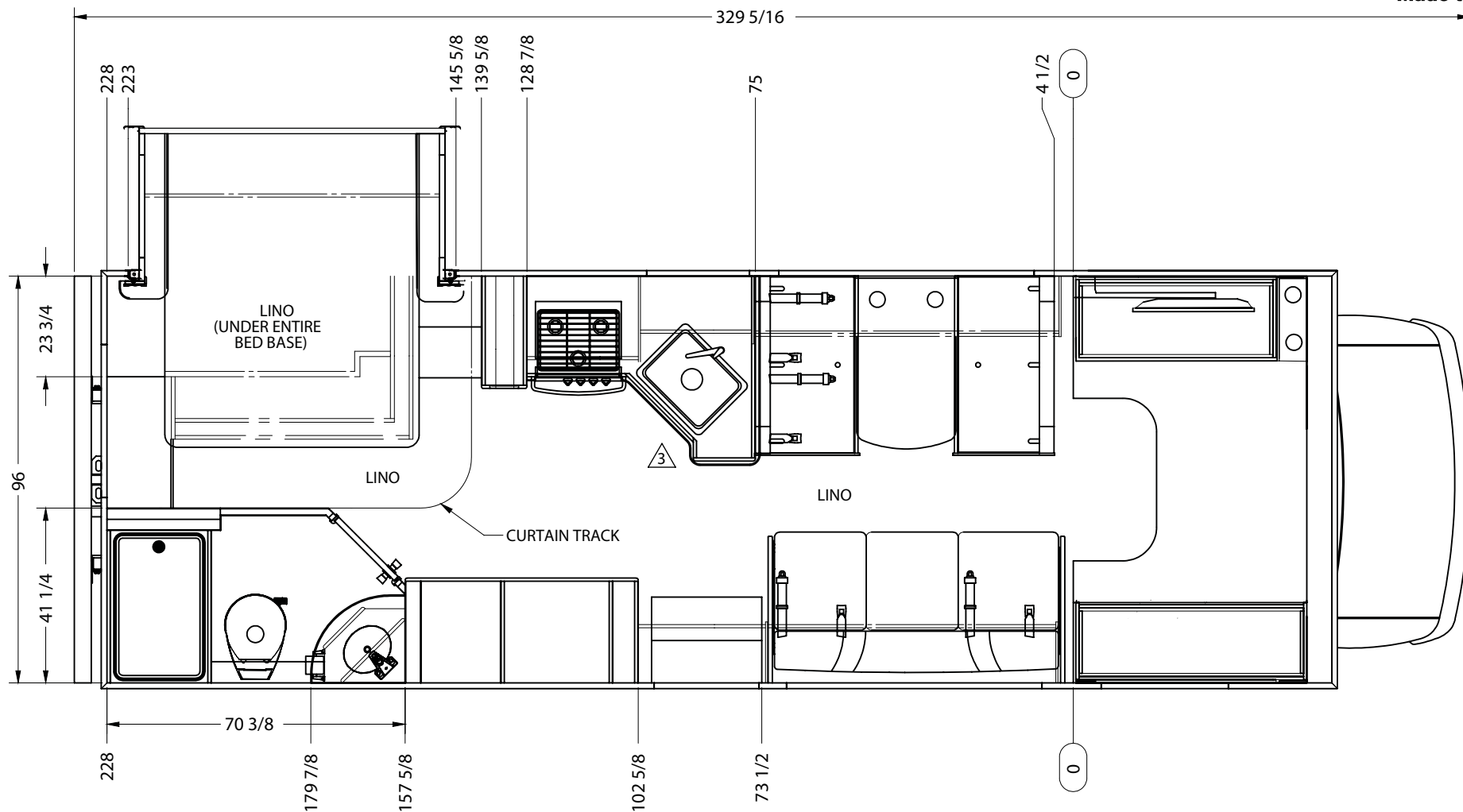
Holding Tank Capacities (gallons): **Fresh-40, Gray-25, Black-29**

Chateau/Four Winds 26B

Floorplan

Model Year 2018

Made to fit.



Chateau/Four Winds 26B

Dimensions

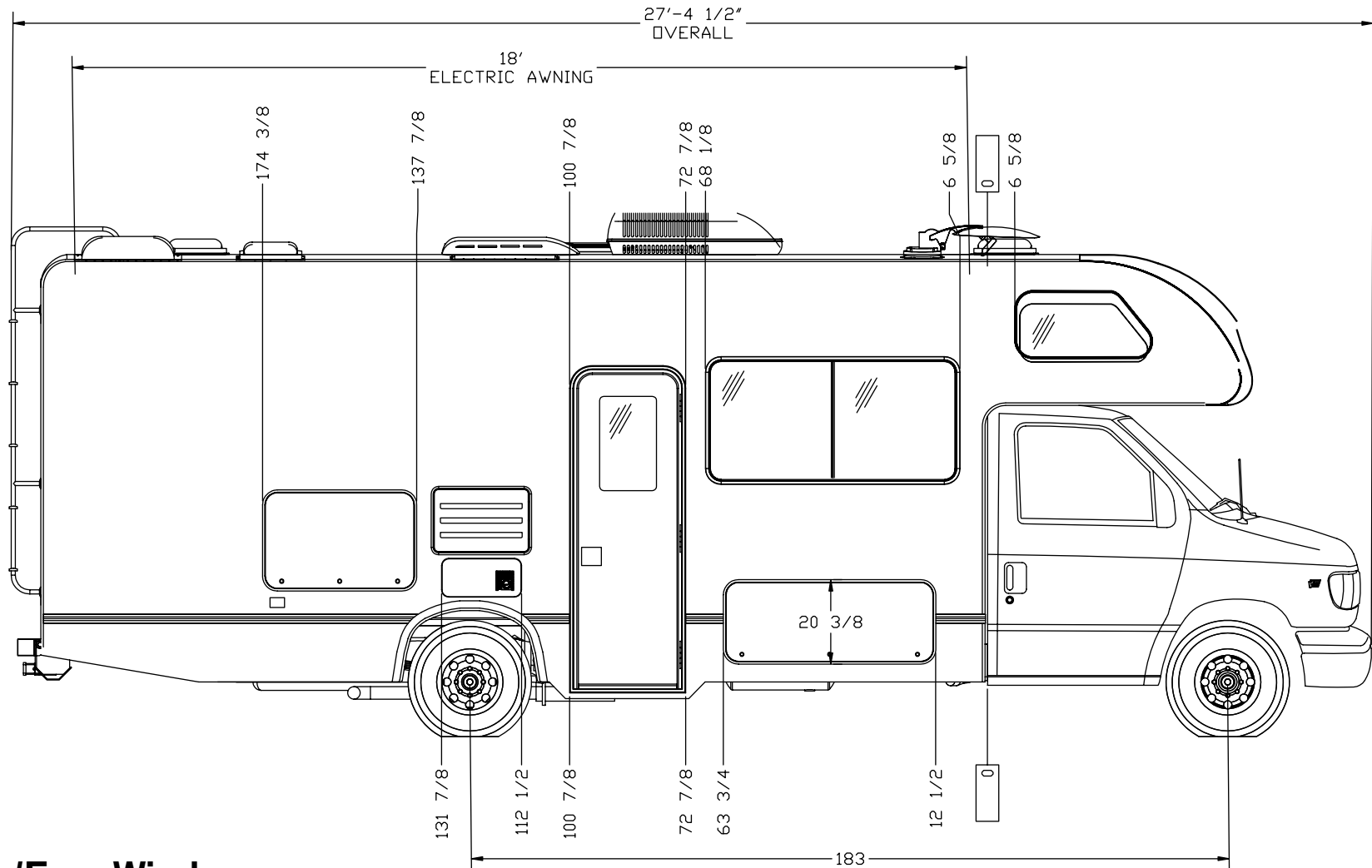
Model Year 2018

TFP0553-05: 12/07/17

1 of 1

This drawing represents features associated with this model and floorplan at the time of writing. For illustration purposes only, exact scale and component placement shown may vary from actual production motorhomes. ©This copyrighted material is the confidential and proprietary information of Thor Motor Coach. Any reproduction in part or as a whole without the expressed written consent from Thor Motor Coach is prohibited.

Made to fit.



Chateau/Four Winds 26B

Right Side Elevation

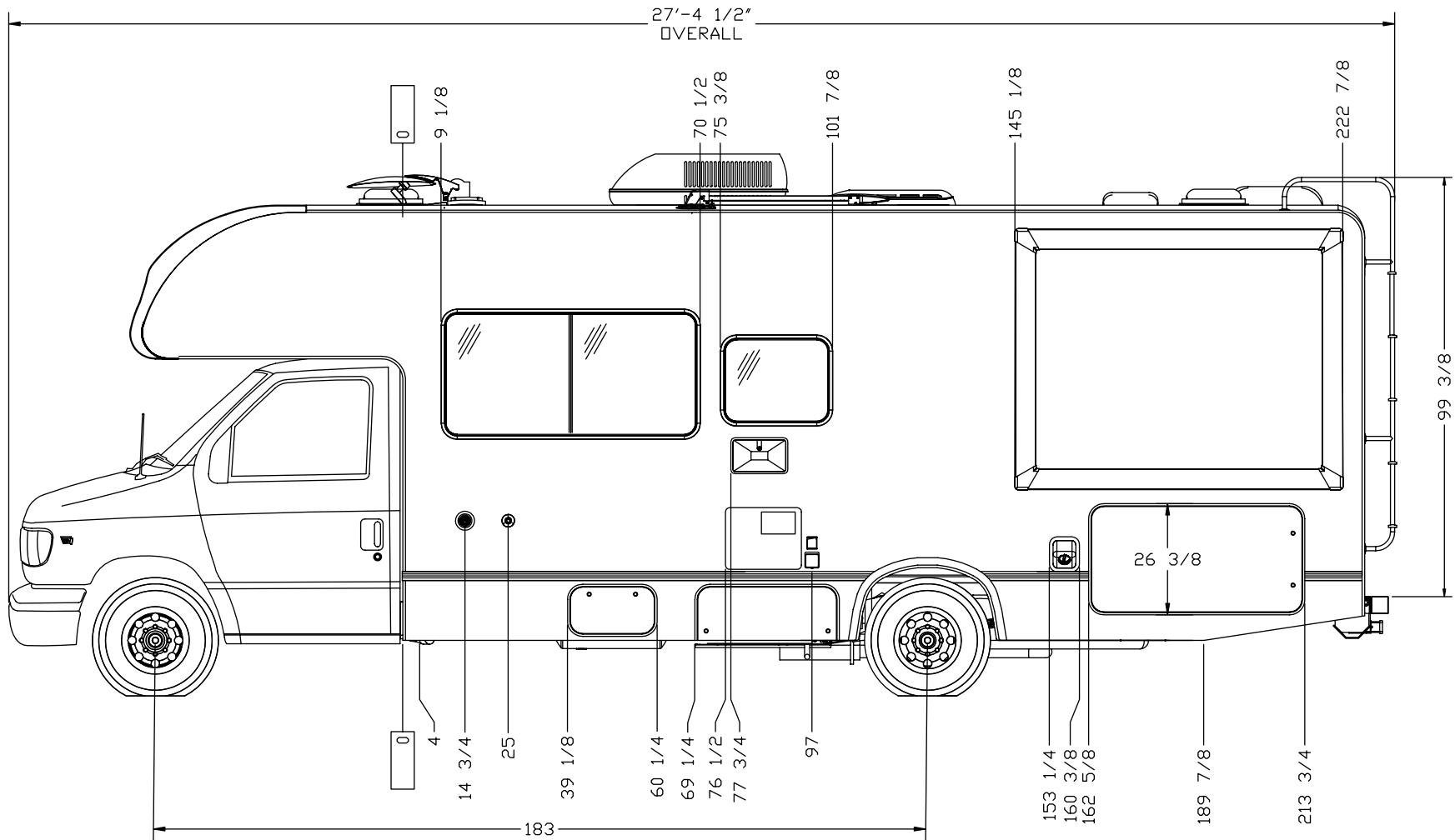
Model Year 2018

TEX0292-01: 08/11/17

1 of 3

This drawing represents features associated with this model and floorplan at the time of writing. For illustration purposes only, exact scale and component placement shown may vary from actual production motorhomes. ©This copyrighted material is the confidential and proprietary information of Thor Motor Coach. Any reproduction in part or as a whole without the expressed written consent from Thor Motor Coach is prohibited.

Made to fit.



Chateau/Four Winds 26B

Left Side Elevation

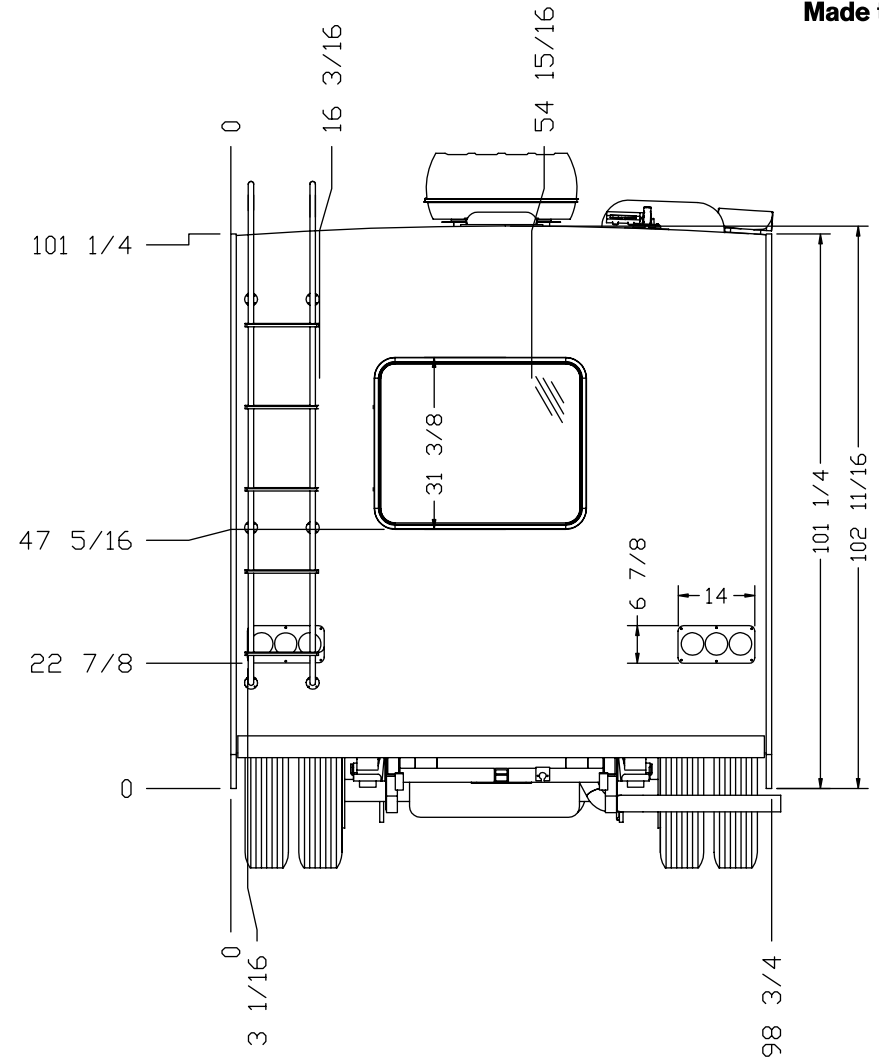
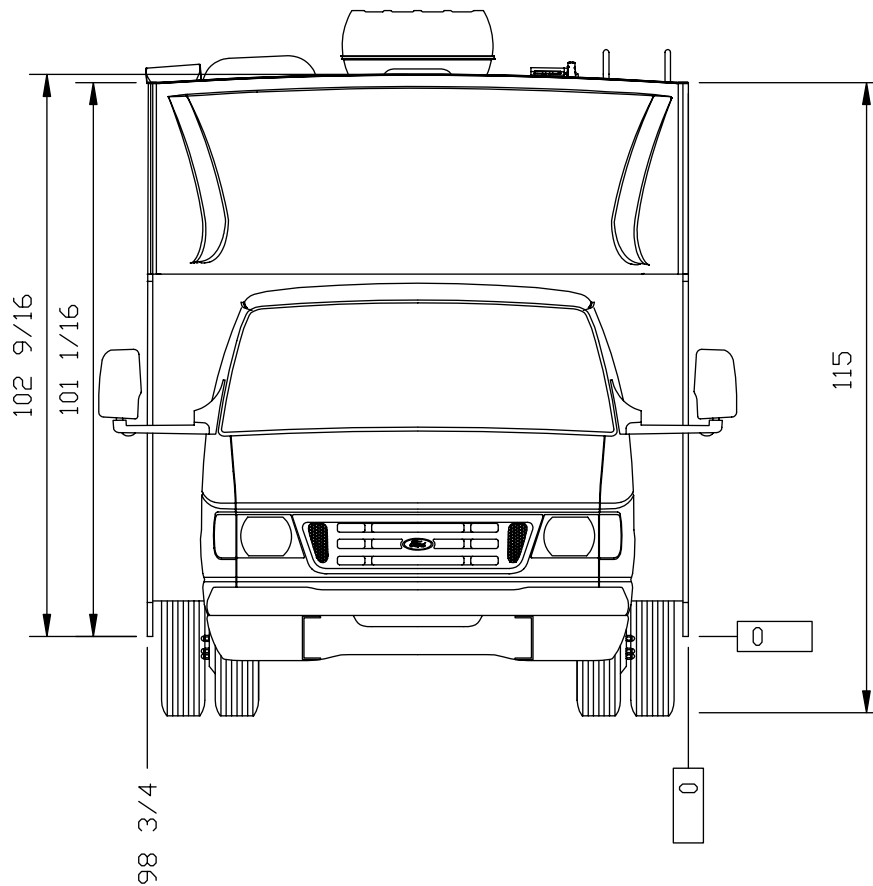
Model Year 2018

TEX0292-01: 08/11/17

2 of 3

This drawing represents features associated with this model and floorplan at the time of writing. For illustration purposes only, exact scale and component placement shown may vary from actual production motorhomes. ©This copyrighted material is the confidential and proprietary information of Thor Motor Coach. Any reproduction in part or as a whole without the expressed written consent from Thor Motor Coach is prohibited.

Made to fit.



Chateau/Four Winds 26B

Front/Rear Elevations

Model Year 2018

TEX0292-01: 08/11/17

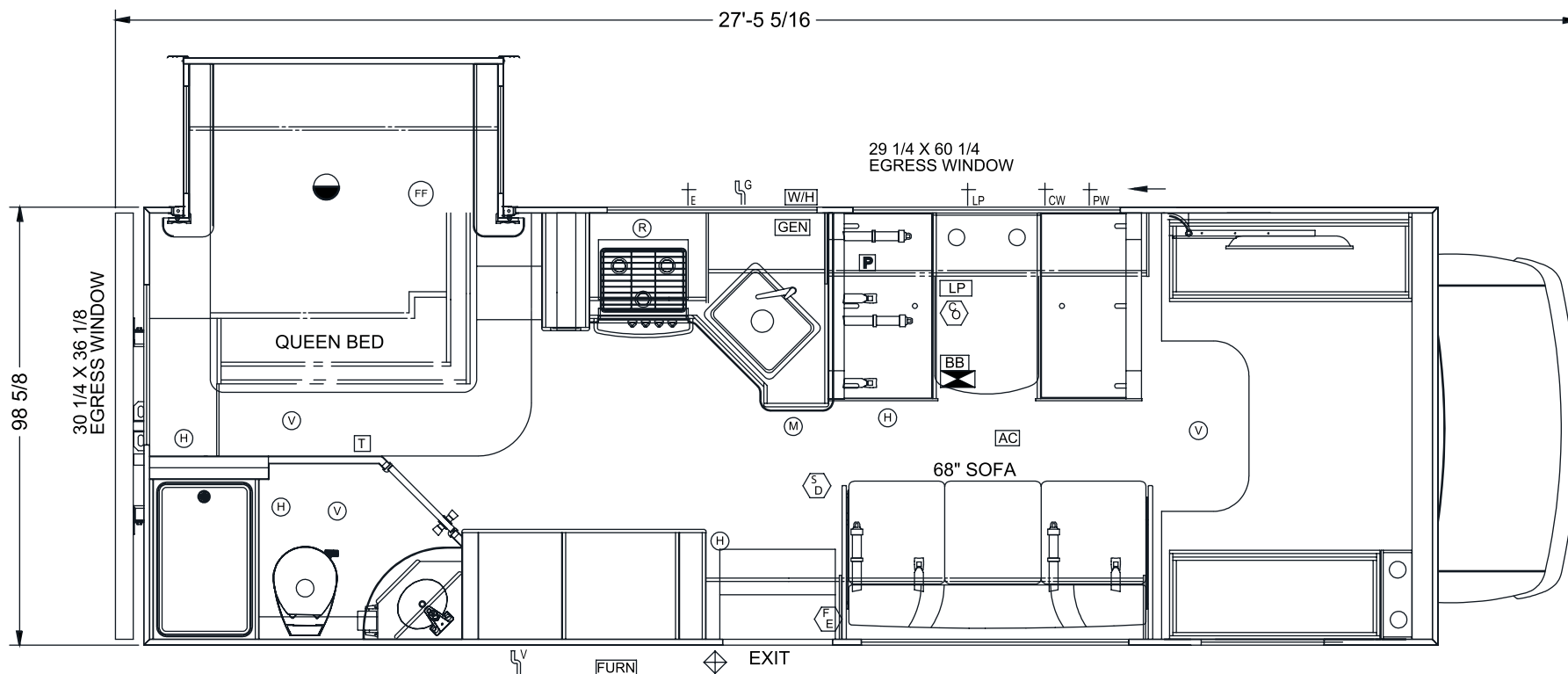
3 of 3

NOTES:

1. POWER CORD EXPOSED A MINIMUM OF 25 FEET.
2. INTERIOR FINISH MATERIAL CONSISTS OF A FLAME SPREAD RATING LESS THAN 200.
3. INTERIOR TEXTILE MATERIALS CONFORM TO FMVSS 302.
4. UNIT BUILT TO LATEST ANSI/NFPA CODES
5. VERTICAL CLEARANCE BETWEEN RANGE BURNERS & COMBUSTIBLE MATERIALS: 21-1/2"
6. 205 - SQUARE FEET
7. POWER CORD ENTRANCE IS WITHIN 15 FT. OF REAR OF VEHICLE.
8. DRAINAGE EXIT IS WITHIN 22 FT. OF REAR OF VEHICLE.



Made to fit.



Chateau/Four Winds 26B

Safety Layout

Model Year 2018

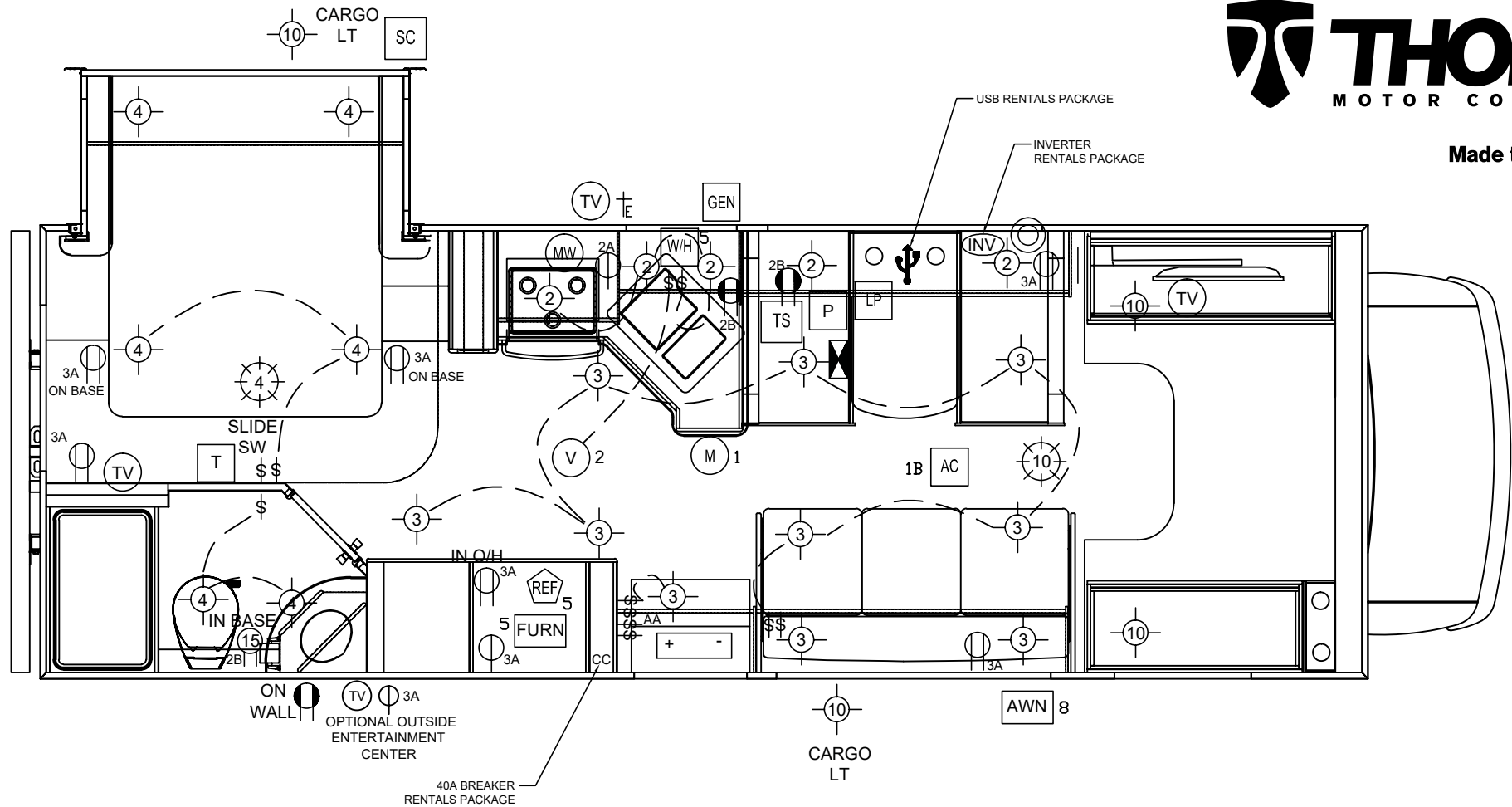
TSL0131-01: 09/22/15

1 of 1

SMOKE DETECTOR	ROOF VENT	INSIGNIA RVIA & STATE	BREAKER BOX
CARBON MONOXIDE DETECTOR	WATER PUMP	VIN IDENTIFICATION	CONVERTER/12V FUSE BLOCK
PROPANE DETECTOR	FURNACE	SEWAGE DRAIN	AC/DC LOAD CENTER
FIRE EXTINGUISHER - 10 BC	WARM AIR REGISTER	PROPANE GAS INLET	12V 12 VOLT CONVERTER/CHARGER
GENERATOR EXHAUST	THERMOSTAT	ELECTRICAL INLET	12V 12 VOLT INVERTER
VEHICLE EXHAUST	WATER HEATER	CITY WATER INLET	12V 12 VOLT INVERTER/CHARGER
AIR CONDITIONER	GENERATOR	POTABLE WATER INLET	
RANGE VENT	MONITOR PANEL	FUEL FILL	

This drawing represents features associated with this model and floorplan at the time of writing. For illustration purposes only, exact scale and component placement shown may vary from actual production motorhomes. ©This copyrighted material is the confidential and proprietary information of Thor Motor Coach. Any reproduction in part or as a whole without the expressed written consent from Thor Motor Coach is prohibited.

Made to fit.



Chateau/Four Winds 26B

12V / 120V; 30A Electrical Diagram

Model Year 2018

TEE2216-06: 09/28/17

1 of 2

TH Water Heater Controller
W/H CONT Tank Heater
TE Phone Jack
VAC Central Vac
LP Propane Detector

FUSE 12V Fuse Block
Converter/12V Fuse Block
Switch
12V light
12v 12V Outlet
BB Breaker Box
V 12V Vent
12V Power fan
+ - 12V Storage Battery
INV 12 Volt Inverter
CM Carbon Monoxide Detector

15 15A GFCI Outlet
GFCI Protected
120V Duplex Outlet
120V Single Outlet
GFCI Protected Single
Electrical Inlet
M Monitor Panel
TS Transfer Switch
IC 12 Volt Inverter/charger

P Water Pump
SC Slideout Controller
GEN Generator
W/H Water Heater
AC Air Cond. 120V
FURN Furnace
T Thermostat
M Macerator
AWN 110VAC Electric Awning

REF Refrigerator
LP/CO Propane/CO Detector
R Range Vent
MW Microwave
TV TV Jack
Radio
Antenna Boost
USB Charge Port
12V Ceiling Fan

This drawing represents features associated with this model and floorplan at the time of writing. For illustration purposes only, exact scale and component placement shown may vary from actual production motorhomes. ©This copyrighted material is the confidential and proprietary information of Thor Motor Coach. Any reproduction in part or as a whole without the expressed written consent from Thor Motor Coach is prohibited.



Made to fit.

12 VOLT AT CONVERTER * BREAKER				
NO	GA.	COLOR	FUSE	POWER TO
1	14/12	BLACK	15	MON PNL & PUMP
2	14	GRAY	15	LEFT SIDE
3	14	VIOLET	15	RIGHT SIDE
4	14	BLUE	15	REAR
5	14	ORANGE	15	APPLIANCES
6	18	ORANGE	* 5	LP DETECTOR
7	14	GREEN	15	TANK HEATER
8	14	GRN/BLK	15	AWNING
9	14	GRY/BLK	15	AUDIO/VIDEO
10	14	BROWN	15	LIGHTS
11	10	RED	30	SLIDE MTR PWR

120 VOLT CIRCUITS				
CIRCUIT	GA.	VOLTS	AMPS	POWER TO
1A	10	120VAC	30 AMP	MAIN
1B	12	115VAC	20 AMP	AIR CONDITIONER
2A	14	120VAC	15 AMP	MICROWAVE
2B	14	120VAC	15 AMP	GFCI RECEPES
3A	14	120VAC	15 AMP	GENERAL (INVERTER)
3B	14	120VAC	15 AMP	CONVERTER
4(A,B)	14	120VAC	15 AMP	WATER HEATER

12 VOLT BREAKER					
NO	GA	COLOR	AMPS	POWER TO	TYPE
AA	4	RED	70	CONVERTER	III
BB	12	RED	15	JACKS	II
CC	6	RED	40	INVERTER	III

APPLIANCE / GENERATOR SPECS		
APPLIANCE	VOLTS	AMPS
MICROWAVE (USA & CSA)	120	12.5
AIR CONDITIONER	115	15.5
REFRIGERATOR (RESIDENTIAL)	120	6.5
CONVERTER	120	7.5
4.0 ONAN	120	33.3
WATER HEATER	120	11.66

Chateau/Four Winds 26B

12V / 120V; 30A Electrical Circuits

Model Year 2018

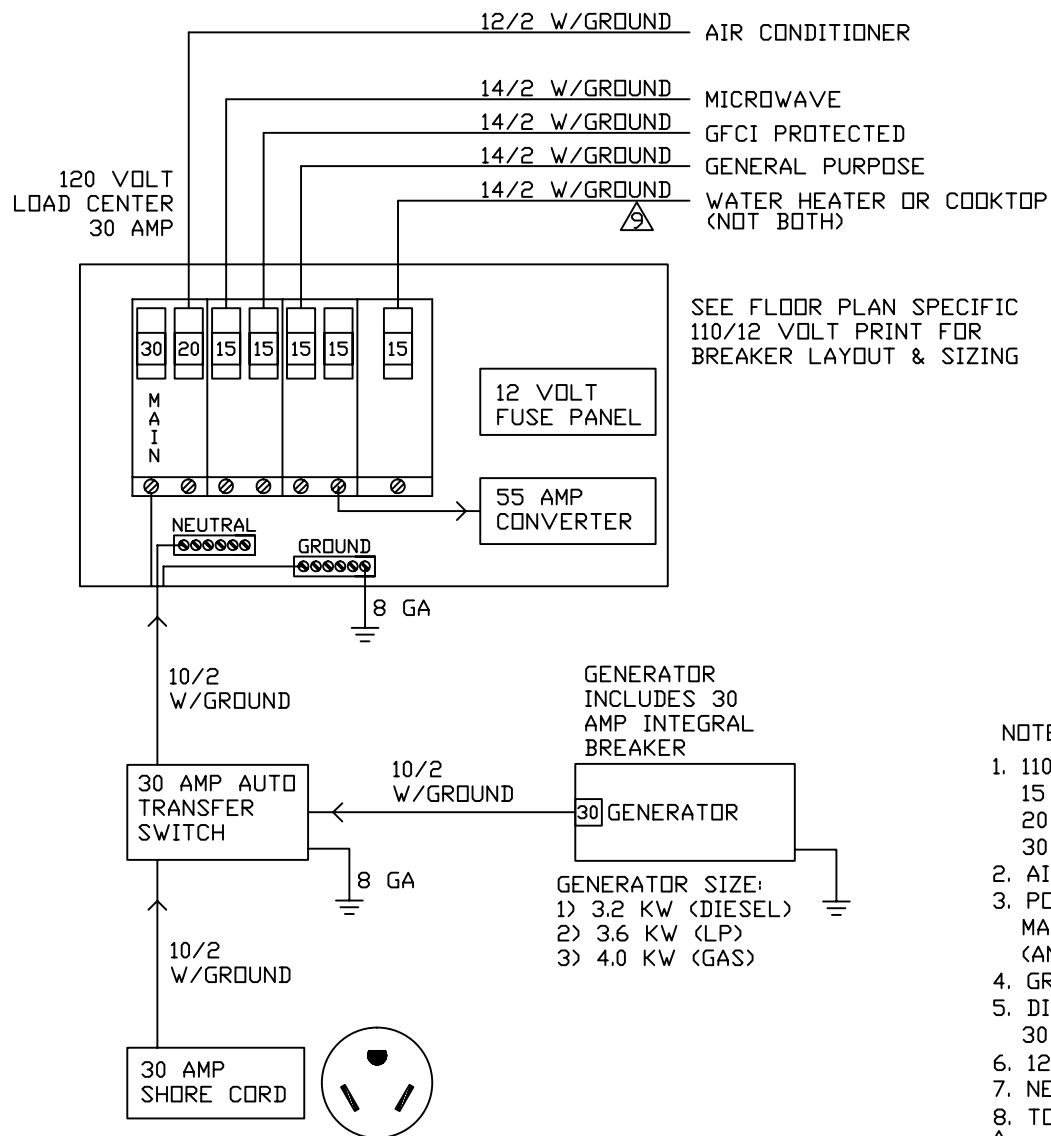
TEE2216-06: 09/28/17

2 of 2


NOTES

1. 12 VOLT WIRE: GXL BELOW FLOOR, GXL OR TEW ABOVE FLOOR
2. 110 WIRE: COPPER TYPE NM SHEATH
3. AIR CONDITIONER BREAKER IS "HACR" TYPE
4. POWER CORD IS 10/2 TYPE STW WITH MINIMUM 25' EXPOSED
5. GROUNDED RECEPES USED & SYSTEM BONDED TO CHASSIS
6. DISTRIBUTION PANELBOARD IS CLASS CTL ENCLOSED TYPE 1
30 AMP 120 VOLT
7. 55 AMP POWER CONVERTER
8. NEUTRAL CONDUCTOR AND GROUNDS ARE ISOLATED IN PANELBOARD

This drawing represents features associated with this model and floorplan at the time of writing. For illustration purposes only, exact scale and component placement shown may vary from actual production motorhomes.
©This copyrighted material is the confidential and proprietary information of Thor Motor Coach. Any reproduction in part or as a whole without the expressed written consent from Thor Motor Coach is prohibited.



NOTES:

1. 110 WIRE: COPPER, TYPE NM-B (US) OR NMD-90 (CSA).
15 AMP BREAKER = 14-2 AWG COPPER WIRE
20 AMP BREAKER = 12-2 AWG COPPER WIRE
30 AMP BREAKER = 10-2 AWG COPPER WIRE
2. AIR CONDITIONER BREAKER IS "HACR" TYPE.
3. POWER CORD IS RATED FOR 30 AMP SERVICE.
MADE WITH 10 AWG WIRE, TYPE STW & MOLDED PLUG
(ANSI/NEMA WD 6-1989 FIG. TT). MINIMUM LENGTH OF 25' EXPOSED.
4. GROUNDED RECEPTS USED & SYSTEM BONDED TO CHASSIS.
5. DISTRIBUTION PANELBOARD IS CLASS CTL ENCLOSED TYPE 1,
30 AMP 120 VOLT.
6. 120VAC SUPPLY WIRING FROM GENERATOR IS STRANDED TYPE.
7. NEUTRAL CONDUCTOR AND GROUNDS ARE ISOLATED IN PANELBOARD.
8. TOTAL NUMBER OF BREAKERS MUST BE LESS THAN 6 (PLUS MAIN).
9.  INSTALL BREAKER AND WIRE WITH APPLIANCE, ONLY.

Chateau/Four Winds 26B

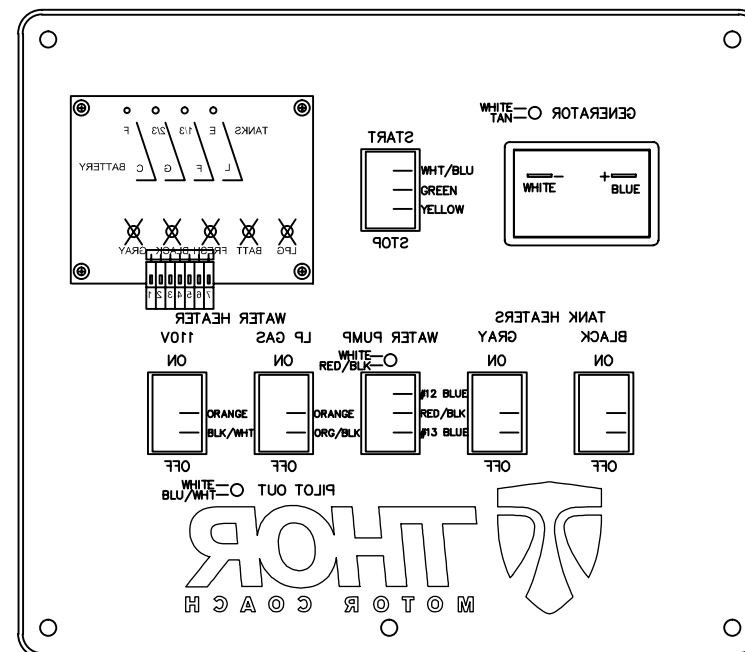
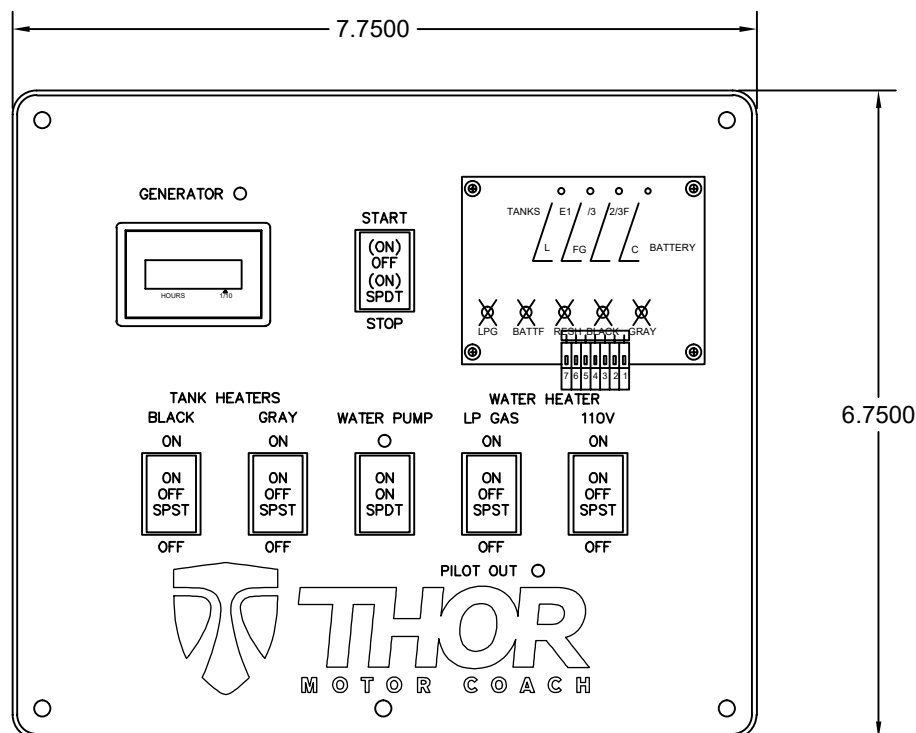
120V; 30A Power Diagram

Model Year 2018

TEE1882-03: 11/30/17

1 of 1

Made to fit.



M1828
(0326196)

1/8" ACRYLIC

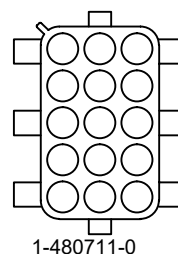
Chateau/Four Winds 26B

Main Panel

Model Year 2018

TPLO638-00: 09/02/15

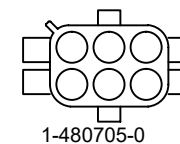
1 of 1



1-480711-0

15 POS CAP
W/SOCKETS

- #1 14 ORANGE
- #2 18 WHITE
- #3 14 BLK/WHT
- #4 14 ORG/BLK
- #5 16 BLU/WHT
- #6 16 GREEN
- #7 16 WHT/BLU
- #8 16 YELLOW
- #9 16 BLUE
- #10 16 TAN
- #11 14 RED/BLK
- #12 14 BLUE
- #13 14 BLUE

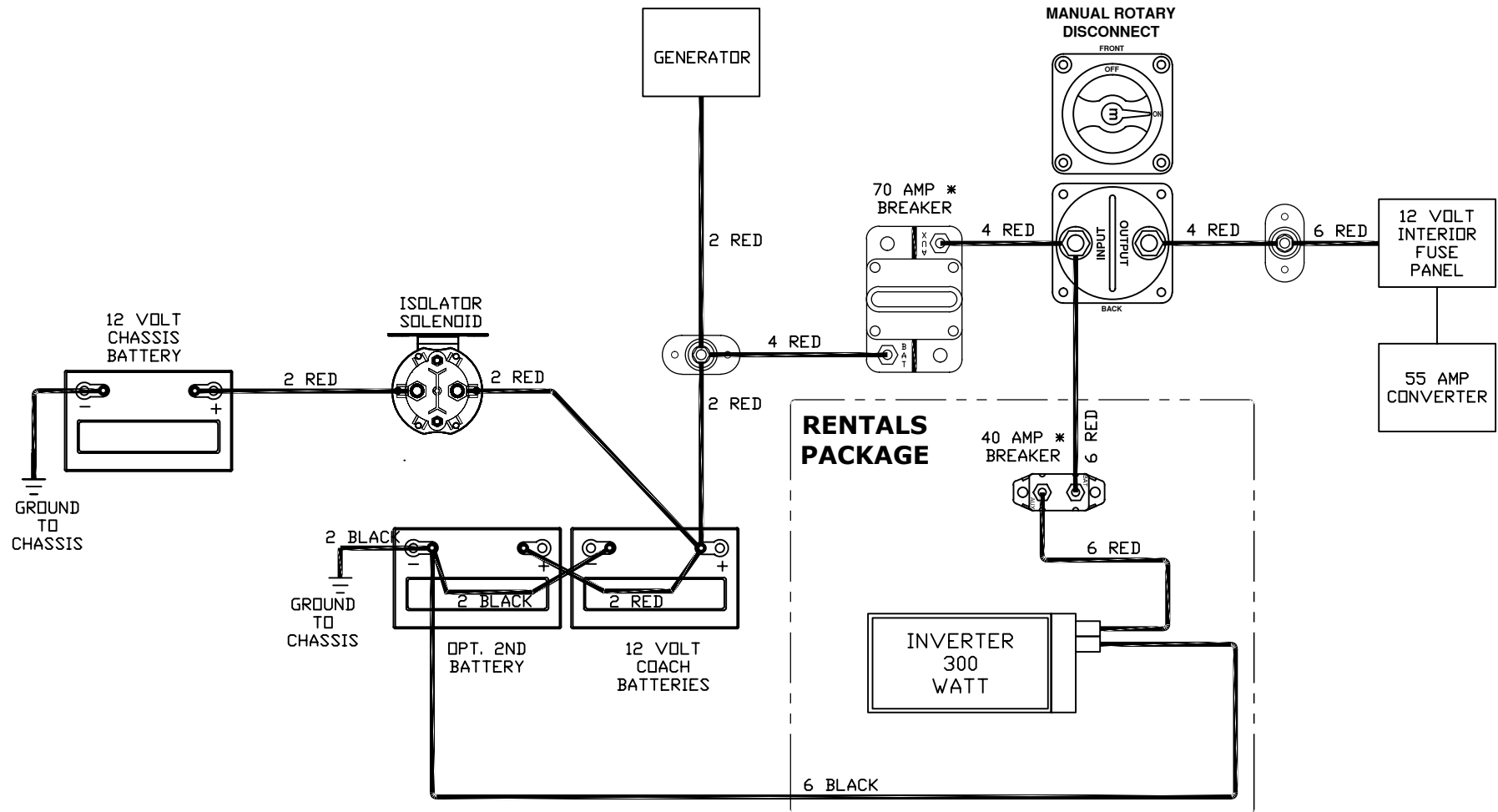


1-480705-0

6 POS CAP
W/SOCKETS

- #1 22 RED - +12V
- #2 22 ORANGE - LP
- #3 22 BLUE - FRSH
- #4 22 BROWN - BLK
- #5 22 GRAY - GRY
- #6 22 WHITE - GND

Made to fit.



Chateau/Four Winds 26B

Battery Compartment

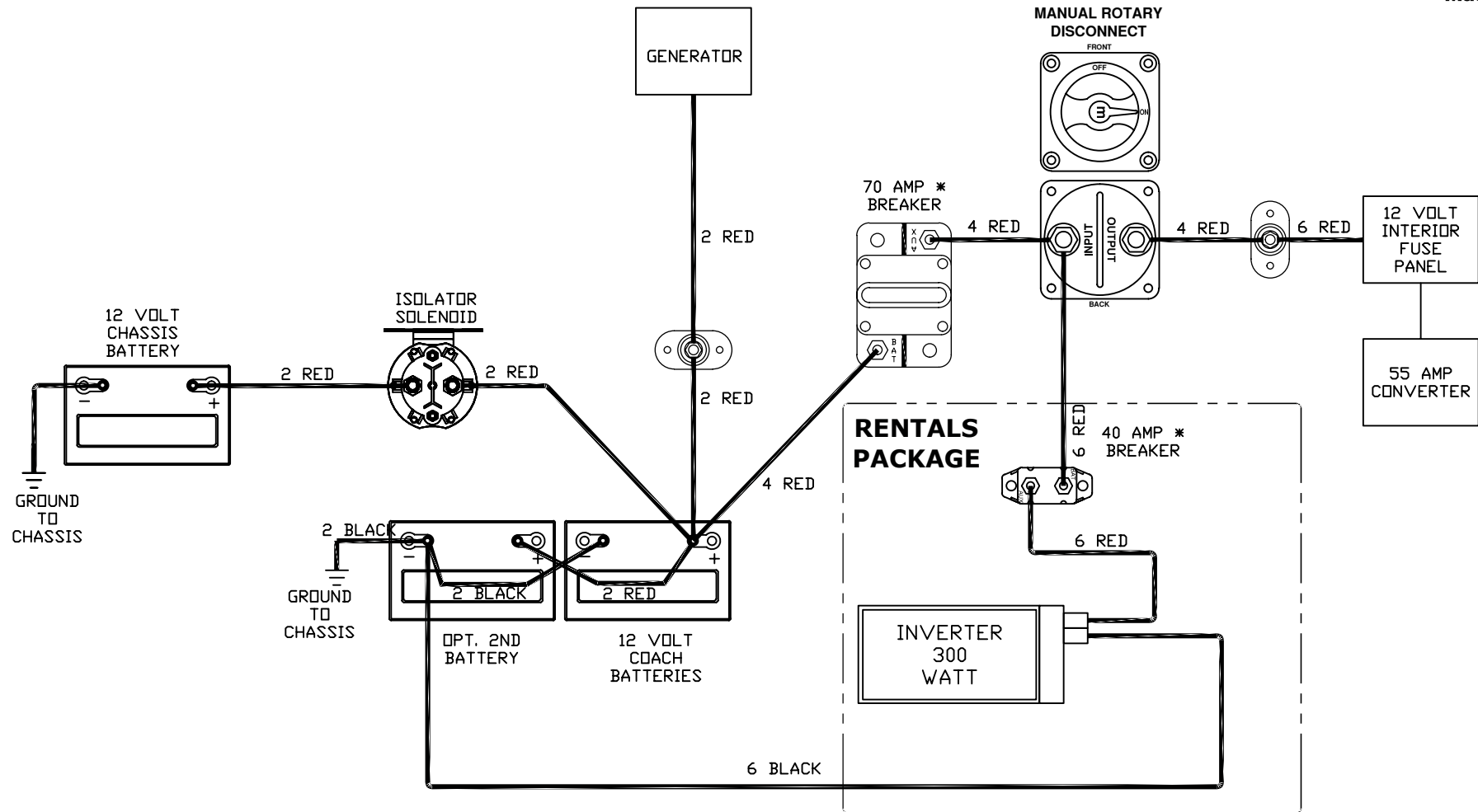
Model Year 2018

TEE2800-00: 09/22/17

1 of 1

This drawing represents features associated with this model and floorplan at the time of writing. For illustration purposes only, exact scale and component placement shown may vary from actual production motorhomes. ©This copyrighted material is the confidential and proprietary information of Thor Motor Coach. Any reproduction in part or as a whole without the expressed written consent from Thor Motor Coach is prohibited.

Made to fit.



* BREAKERS ARE MANUAL RESET

Chateau/Four Winds 26B

Battery Compartment

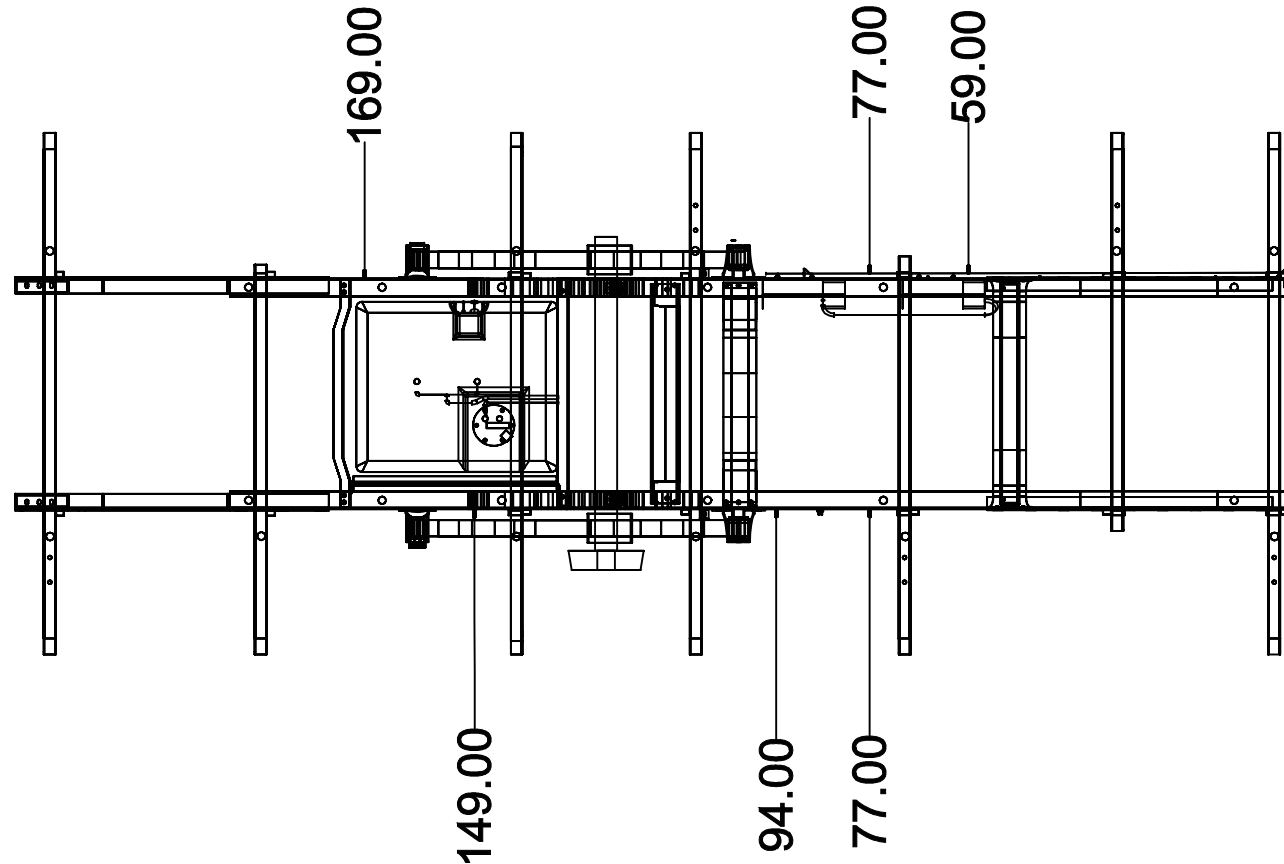
Model Year 2018

TEE2814-00: 10/03/17

1 of 1

NOTES:

1. BATTERY CABLES, SDM AND SIR INFLATOR MODULES MUST BE DISCONNECTED PRIOR TO ANY WELDING ON THE CHASSIS.
2. DIMENSIONS ARE TO THE CENTER OF THE GROUND STUD
3. GRIND PAINT OFF FRAME APPROXIMATELY 1" IN CENTER OF VERTICAL FACE OF FRAME. WELD 3/8" X 1 1/4" BOLT IN CENTER OF BARE METAL. IF USING A BOLT THROUGH HOLE IN FRAME, WELD ONLY ON INSIDE OF RAIL.
4. TOLERANCES: STUD OR HOLE; +/- 2"



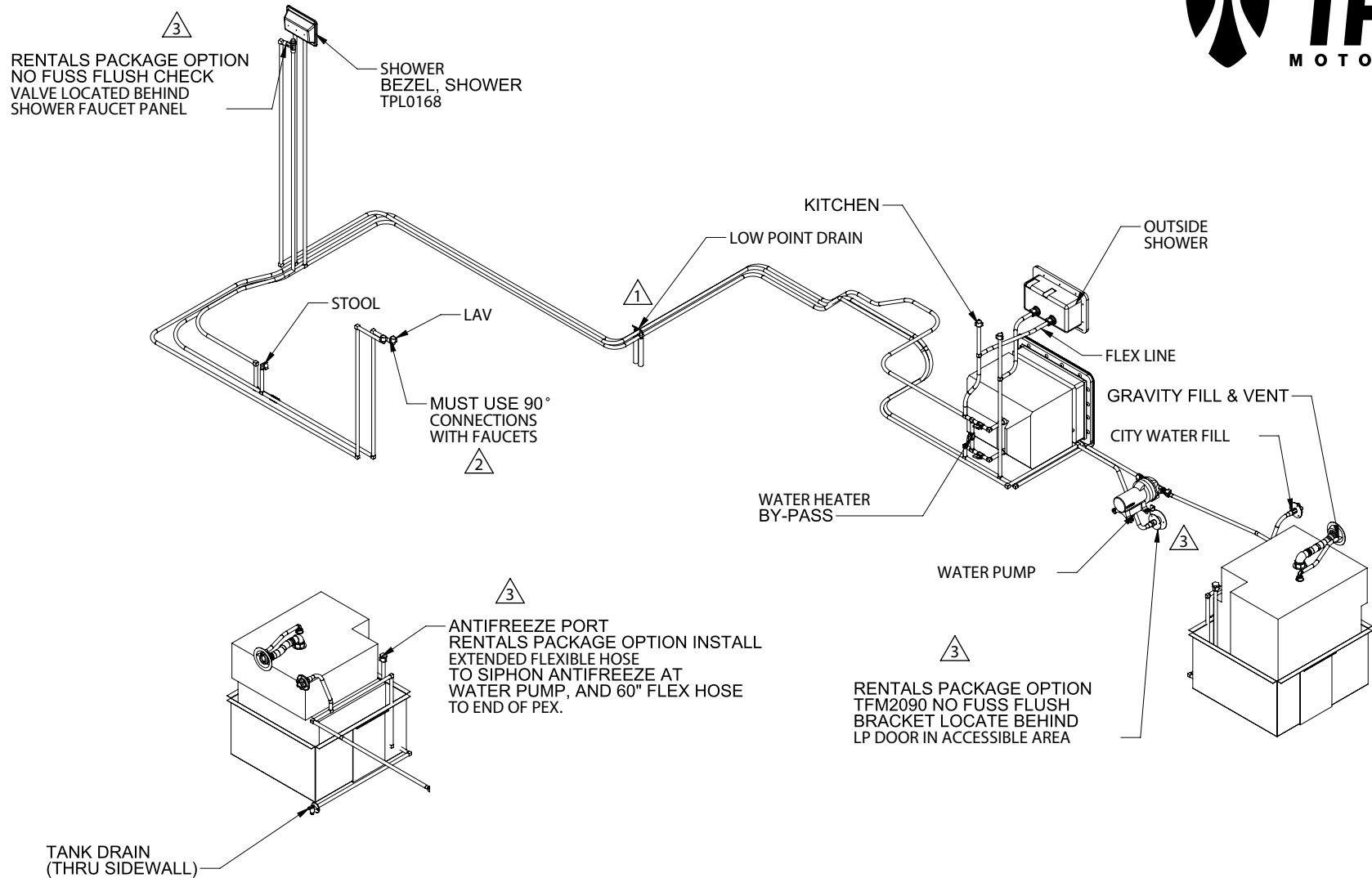
Chateau/Four Winds 26B

Ground Studs

Model Year 2018

TEE1469-01: 11/23/15

1 of 1



Chateau/Four Winds 26B

Fresh Water Plumbing

Model Year 2018

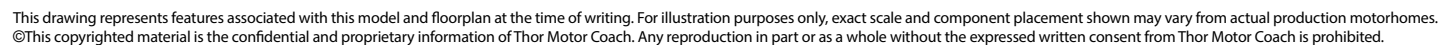
TFW0287-03: 10/06/17

1 of 1

COLD = 1/2" I.D. PIPE
HOT = 1/2" I.D. PIPE

WATER LINES:
SDR9 PEX-A, CSA APPROVED
1/2" I.D. POTABLE
160 PSI @ 79.4F
100 PSI @ 180F
80 PSI @ 200F

COPPER AND PLASTIC ELBOWS AND TEES USED.
WATER LINES SECURED EVERY THREE FEET.





Made to fit.

BOM				
NO	QTY	DESCRIPTION - W x L (GRAIN)	SIZE A	SIZE B
1	1	3 X 1 1-2 REDUCER		
2	1	3 x 1.5 TERMINATION VALVE		
3	1	22.5 DEGREE STREET ELBOW, 3 INCH		
4	2	90 DEGREE STREET ELBOW, 1.5		
5	1	ABS CLEAN OUT, 1-1/2"		
6	5	ABS ELBOW, 45°, 1-1/2"		
7	4	ABS ELBOW, 90° LONG TURN, 1-1/2"		
8	1	ABS ELBOW, 90° STREET, 3"		
9	4	ABS SANITARY TEE, 90°, 1-1/2"		
10	1	ABS VALVE, 3"		
11	1	ABS, ANTI-SIPHON VENT, 1-1/2"		
12	3	PVC, 1.5 INCH HUB BY 1.5 INCH MPT		
13	2	SCHEDULE 40 P-TRAP		
14	1	SPIN FITTINGS (TDW0585)		
15	1	STOOL FLANGE		
16	1	PIPE, ABS 3"		71
17	1	PIPE, ABS 1-1/2"		7 1/2
18	1	PIPE, ABS 1-1/2"		21
19	1	PIPE, ABS 1-1/2"		4
20	1	PIPE, ABS 1-1/2"		59 11/16
21	1	PIPE, ABS 1-1/2"		21
22	1	PIPE, ABS 1-1/2"		5
23	2	PIPE, ABS 1-1/2"		4
24	1	PIPE, ABS 1-1/2"		7 1/2
25	1	PIPE, ABS 1-1/2"		78
26	1	PIPE, ABS 1-1/2"		5
27	1	PIPE, ABS 1-1/2"		59
28	1	PIPE, ABS 1-1/2"		15
29	1	PIPE, ABS 1-1/2"		16
30	1	PIPE, ABS 1-1/2"		13 1/2
31	1	PIPE, ABS 1-1/2"		20
32	1	PIPE, ABS 1-1/2"		4
33	1	PIPE, ABS 1-1/2"		5
34	1	PIPE, ABS 1-1/2"		12 1/2
35	1	PIPE, ABS 1-1/2"		5
36	1	ABS ELBOW, 90°, 1-1/2"		
37	1	ABS P-TRAP, SCHEDULE 40, 1 1/2"		
38	1	1.5 FEMALE THREADED ADAPTER		

BOM TOTAL			
QTY	DESCRIPTION	EXTENDED	U/M
1	1.5 FEMALE THREADED ADAPTER	1	EA
1	22.5 DEGREE STREET ELBOW, 3 INCH	1	EA
1	3 x 1.5 TERMINATION VALVE	1	EA
1	ABS CLEAN OUT, 1-1/2"	1	EA
5	ABS ELBOW, 45°, 1-1/2"	5	EA
4	ABS ELBOW, 90° LONG TURN, 1-1/2"	4	EA
2	ABS ELBOW, 90° SHORT TURN STREET, 1-1/2"	2	EA
1	ABS ELBOW, 90° STREET, 3"	1	EA
1	ABS ELBOW, 90°, 1-1/2"	1	EA
1	ABS P-TRAP, SCHEDULE 40, 1 1/2"	1	EA
1	ABS REDUCER, 3" X 1-1/2"	1	EA
4	ABS SANITARY TEE, 90°, 1-1/2"	4	EA
1	ABS VALVE, 3"	1	EA
1	ABS, ANTI-SIPHON VENT, 1-1/2"	1	EA
3	FITTING, 1.5 SPIN, HD FPT RAISED	3	EA
1	FITTING, 3 SPIN, HD FPT RAISED	1	EA
20	PIPE, ABS 1-1/2"	30.55	LF
1	PIPE, ABS 3"	5.92	LF
3	PVC, 1.5 INCH HUB BY 1.5 INCH MPT	3	EA
2	SCHEDULE 40 P-TRAP	2	EA
1	STOOL FLANGE	1	EA

Chateau/Four Winds 26B

Waste Water Drainage

Model Year 2018

TDW0661-02: 04/19/17

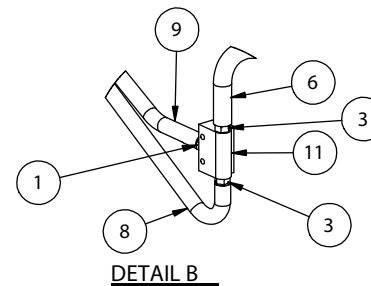
2 of 2

This drawing represents features associated with this model and floorplan at the time of writing. For illustration purposes only, exact scale and component placement shown may vary from actual production motorhomes.
©This copyrighted material is the confidential and proprietary information of Thor Motor Coach. Any reproduction in part or as a whole without the expressed written consent from Thor Motor Coach is prohibited.

BOM(Restructured)			
NO	QTY	DESCRIPTION - W x L (GRAIN)	SIZE B
1	3	.25" MALE END	
2	3	.375" FEMALE END	
3	6	.375" MALE END	
4	1	COPPER RISER_12"	
5	1	LP, FLEX LINE 1/2"	60
6	1	LP, FLEX LINE 1/2"	78
7	1	LP, FLEX LINE 3/8"	72
8	1	LP, FLEX LINE 3/8"	132
9	1	LP, FLEX LINE 3/8"	138
10	1	LP, FLEX LINE 3/8"	156
11	1	SPLITTER_3 WAY	
12	1	SPLITTER_4 WAY	

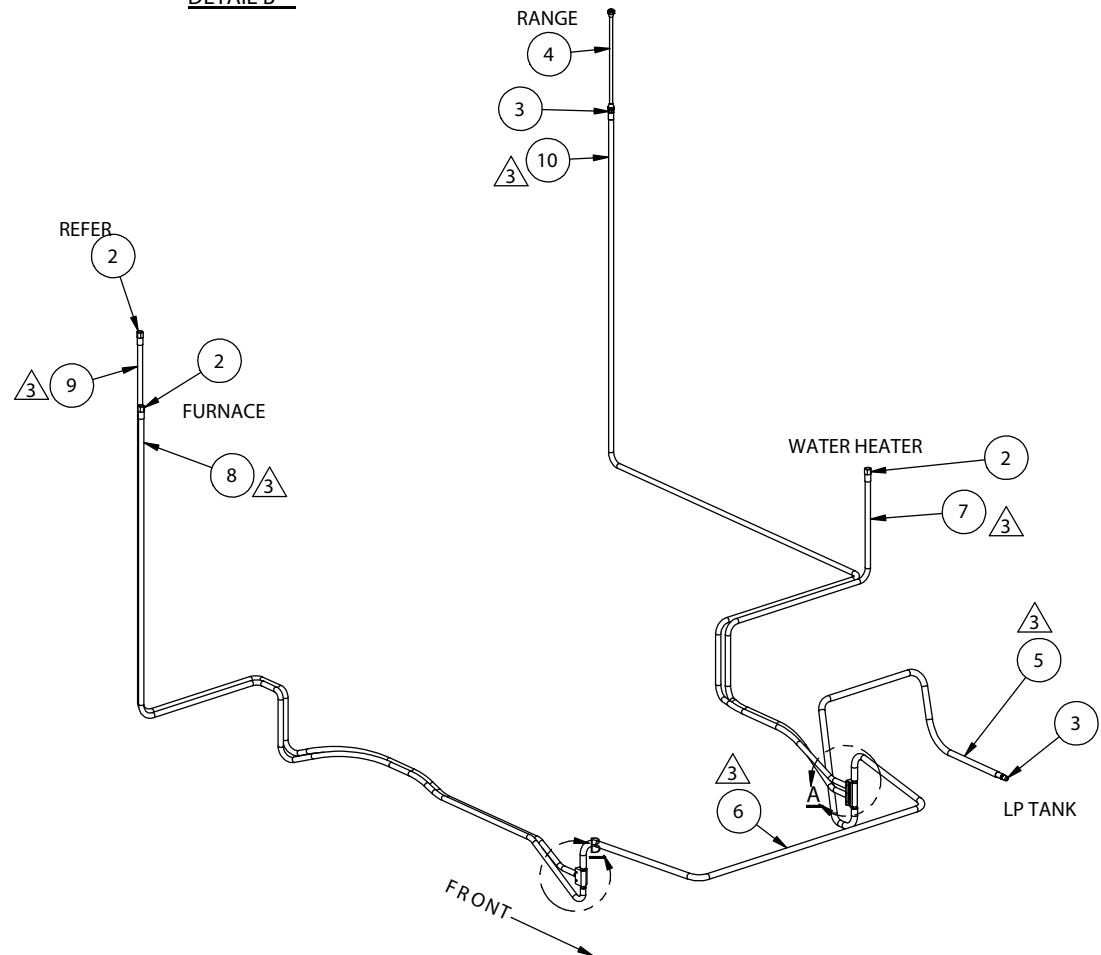
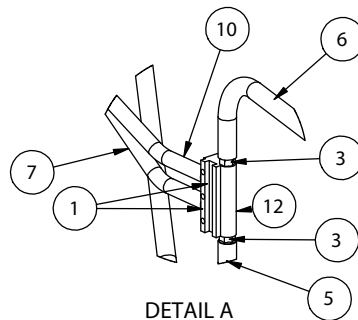


Made to fit.



NOTES:

1. 1/2" ID AND 3/8" ID RUBBER MANIFOLD USED.
2. MANIFOLD CONNECTED TO GAS SUPPLY BY A LISTED 1/2" I.D. FLEXIBLE CONNECTOR.
3. MANIFOLD CONNECTED TO APPLIANCES BY 3/8" I.D. FLEXIBLE CONNECTORS.
4. 3/8" FLAIR COPPER FITTINGS USED
5. MAXIMUM DEVELOPED LENGTH: USA=276" & CSA=276"
6. THIS SYSTEM SIZED BY TESTING ACCORDING TO LATEST ANSI A119.2 / NFPA 1192 CODE. REFERENCE TEST REPORT TMC194 (MAX 112.18 BTUH, 504" DEVELOPED LENGTH)
7. APPLIANCE INPUT RATINGS:
 - WATER HEATER: 8,800 BTUH ACTUAL
 - RANGE: 29,100 BTUH ACTUAL
 - FURNACE: 30,000 BTUH ACTUAL
 - REFRIGERATOR 1,500 BTUH ACTUAL
 - TOTAL 69,400 BTUH ACTUAL
8. ORDER OF APPLIANCES MAY VARY
9. L/P TANK REGULATOR IS A LISTED TWO STAGE WITH EXCESS FLOW VALVE RATED AT 195,000 BTUH.
10. GROUND CLEARANCE:
 - 12 1/2" FROM BOTTOM OF L/P TANK TO GROUND.
 - 6 1/2" FROM BOTTOM REAR AXLE TO GROUND.



Chateau/Four Winds 26B

Propane Manifold

Model Year 2018

TLP0301-03: 12/06/17

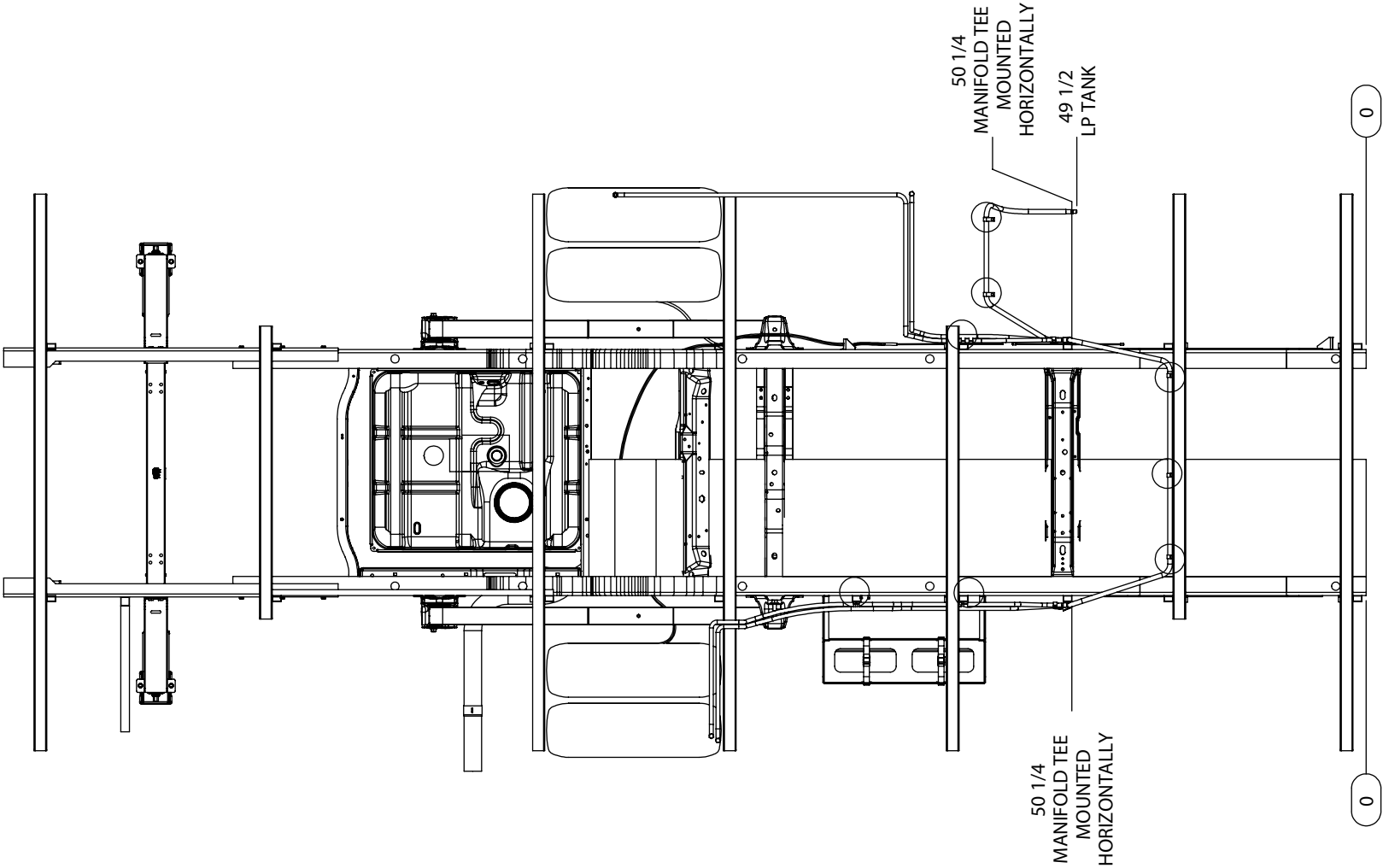
1 of 1

This drawing represents features associated with this model and floorplan at the time of writing. For illustration purposes only, exact scale and component placement shown may vary from actual production motorhomes. ©This copyrighted material is the confidential and proprietary information of Thor Motor Coach. Any reproduction in part or as a whole without the expressed written consent from Thor Motor Coach is prohibited.

BOM		
NO	QTY	DESCRIPTION - W x L (GRAIN)
1	1	MANIFOLD, FLEXIBLE LP (TLP0301)
2	18	P-CLAMP



Made to fit.



Chateau/Four Winds
26B

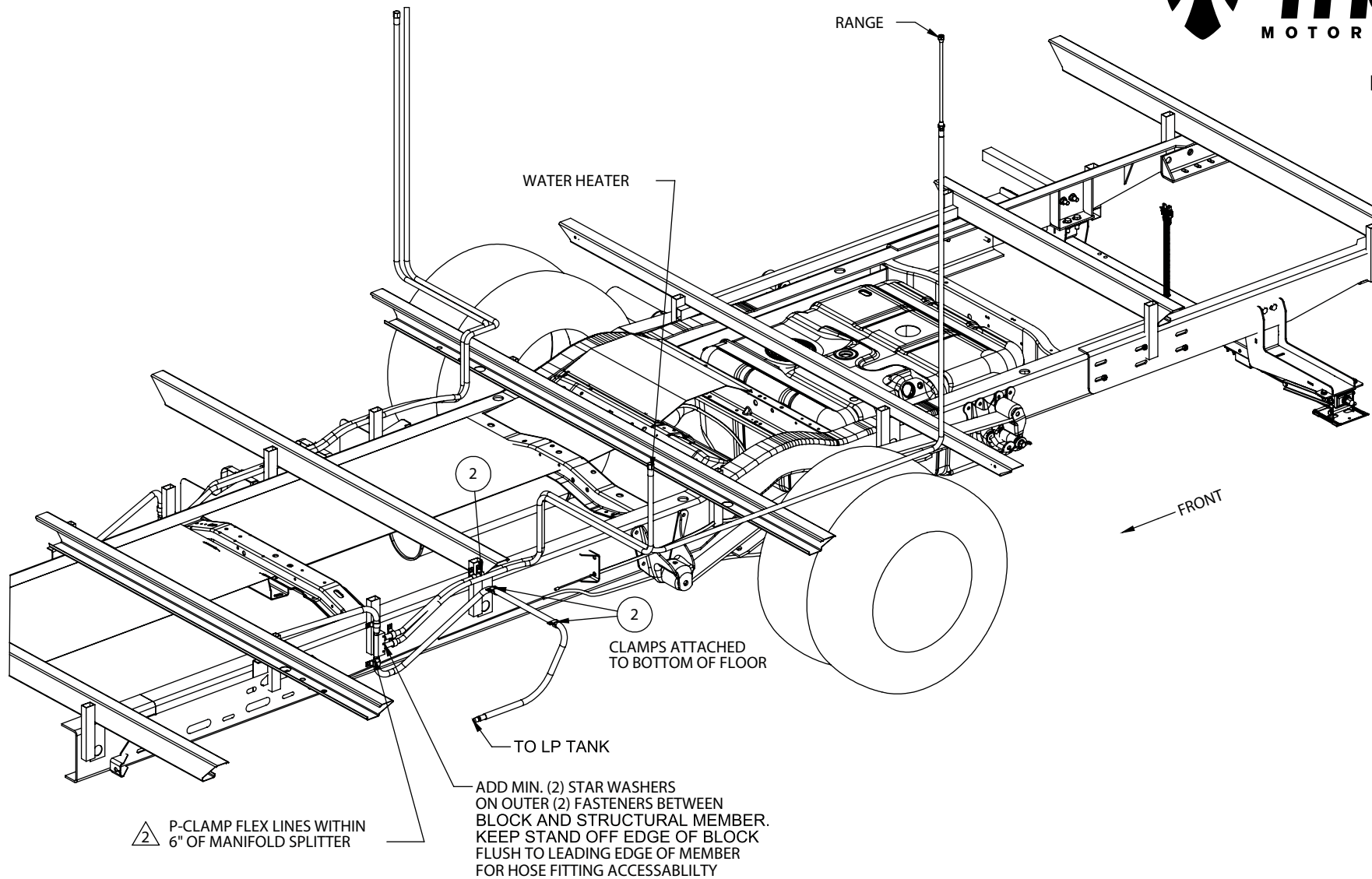
Propane Layout

Model Year 2018
TLP0302-02: 03/06/17
1 of 3

- SPECIAL NOTES:
- INSTALL P-CLAMPS & FLEXIBLE LINES AS INDICATED. THE MINIMUM FLEXIBLE LINE BEND RADIUS IS 4".
 - P-CLAMPS ON FLEXIBLE LP LINES MUST BE WITHIN 6" OF CONNECTIONS & SPACED A MAXIMUM 12" APART WHEN CROSSING THE CHASSIS & NOT EXCEEDING 36" APART WHEN RUNNING DOWN THE CHASSIS LENGTH.
 - INSTALL A MIN. OF (2) STAR WASHERS, ONE PER OUTSIDE FASTENER BETWEEN EACH MANIFOLD SPLITTER & CHASSIS STRUCTURE.

INDICATES P-CLAMP LOCATION

This drawing represents features associated with this model and floorplan at the time of writing. For illustration purposes only, exact scale and component placement shown may vary from actual production motorhomes. ©This copyrighted material is the confidential and proprietary information of Thor Motor Coach. Any reproduction in part or as a whole without the expressed written consent from Thor Motor Coach is prohibited.



Chateau/Four Winds 26B

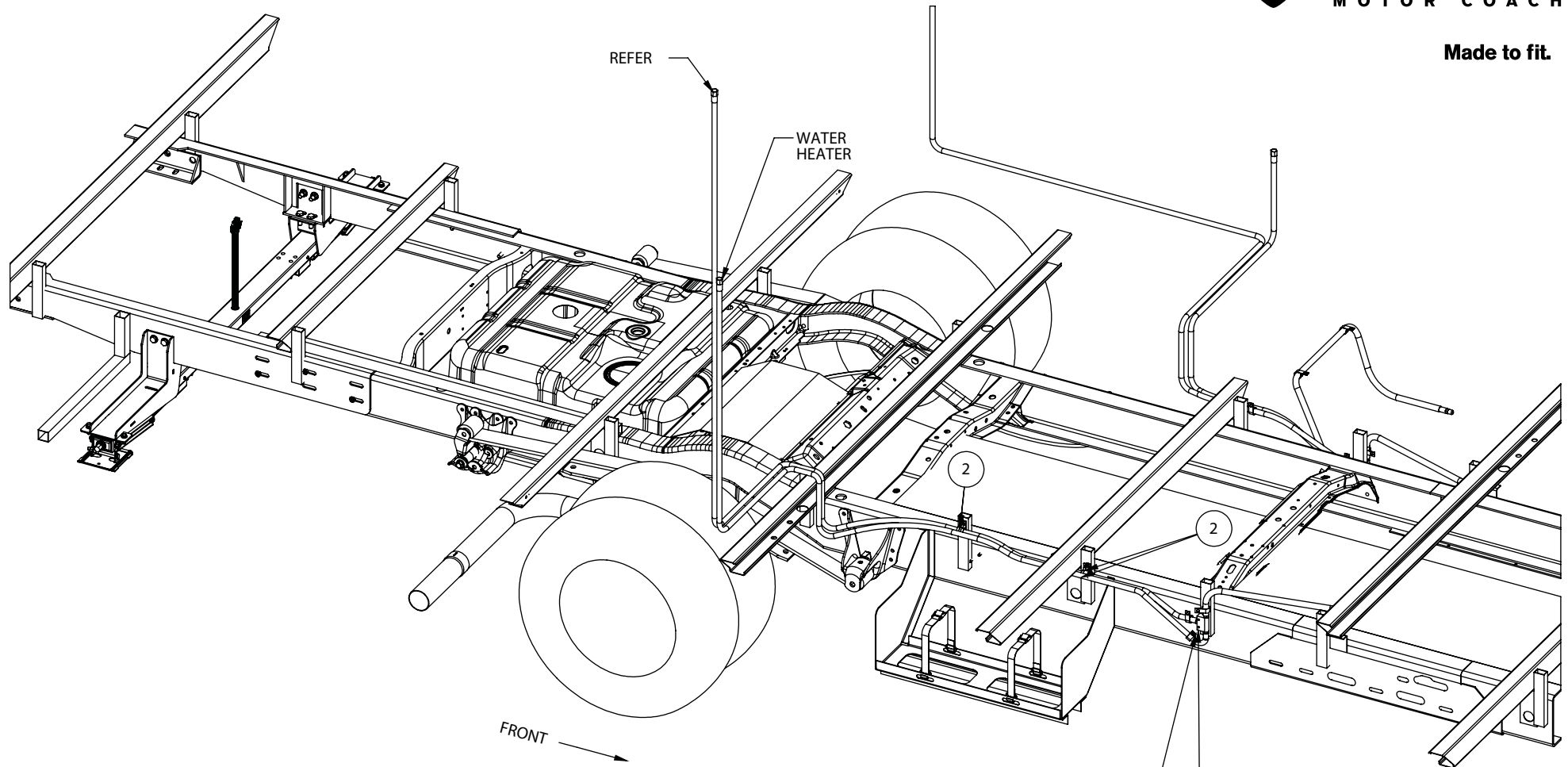
Propane Layout

Model Year 2018

TLP0302-02: 03/06/17

2 of 3

○ INDICATES P-CLAMP LOCATION



△ 2 P-CLAMP FLEX LINES WITHIN
6" OF MANIFOLD SPLITTER

ADD MIN. (2) STAR WASHERS
ON OUTER (2) FASTENERS BETWEEN
BLOCK AND STRUCTURAL MEMBER.
KEEP STAND OFF EDGE OF BLOCK
FLUSH TO LEADING EDGE OF MEMBER
FOR HOSE FITTING ACCESSABILITY

○ INDICATES P-CLAMP LOCATION

Chateau/Four Winds 26B

Propane Layout

Model Year 2018

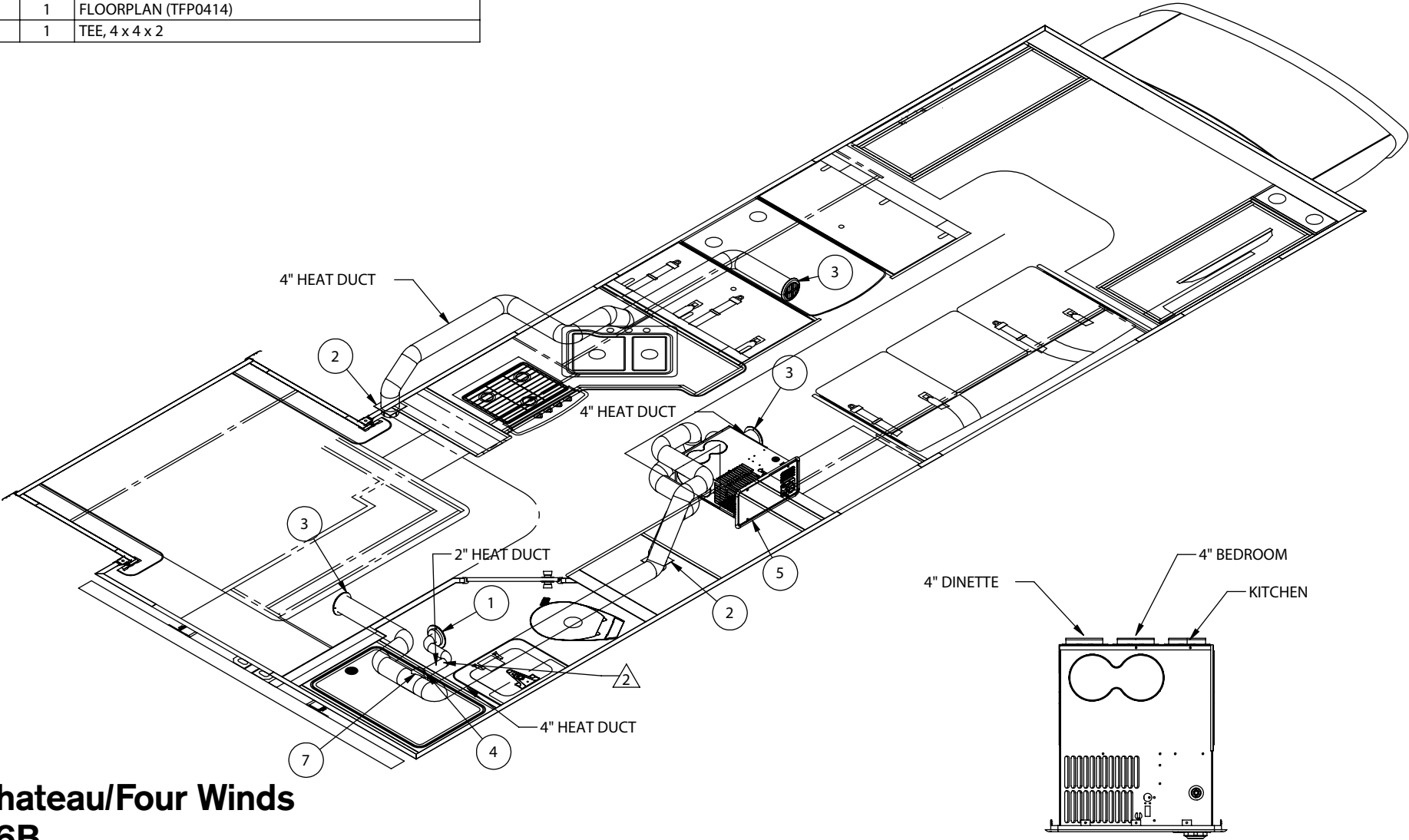
TLP0302-02: 03/06/17

3 of 3

LAYOUT, HEAT		
NO	QTY	DESCRIPTION - W x L (GRAIN)
1	1	2 Inch Rotair
2	2	4 FLOOR FLANGE
3	3	4 Inch Rotair
4	1	ADAPTER, 4" TO 2"
5	1	ATWOOD, 30K Next Gen
6	1	FLOORPLAN (TFP0414)
7	1	TEE, 4 x 4 x 2



Made to fit.



Chateau/Four Winds
26B

Heating Layout

Model Year 2018
THL0144-02: 06/06/16
1 of 1

This drawing represents features associated with this model and floorplan at the time of writing. For illustration purposes only, exact scale and component placement shown may vary from actual production motorhomes. ©This copyrighted material is the confidential and proprietary information of Thor Motor Coach. Any reproduction in part or as a whole without the expressed written consent from Thor Motor Coach is prohibited.